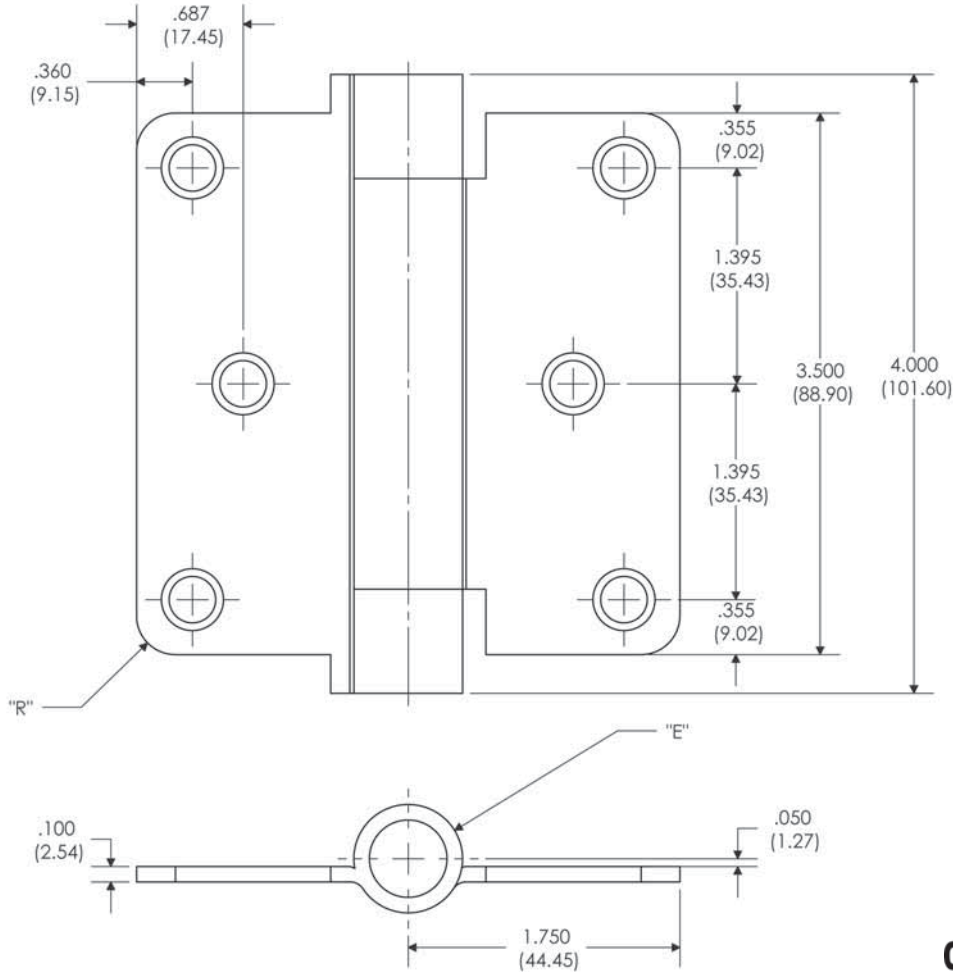




FULL MORTISE U.L. LISTED SPRING HINGE

RS
3 1/2" x 3 1/2"



| Part Number | | | Gauge of Metal | "E" Outside Dia. | "R" Corner Radius |
|-------------|-------|-----------|----------------|------------------|-------------------|
| Steel | Brass | Stainless | | | |
| RS81 | - | - | .100" | .720" | Square |
| RS81 | - | - | .100" | .720" | 1/4" |
| RS81 | - | - | .100" | .720" | 5/8" |

NOTE:

- 1 screw pack includes (18) machine screws and (18) wood screws.
- Screw size: FHMS - 10-24 x 1/2"
FHWS - 10 x 1"
- All hinges are ANSI template.

PBB, Inc.
World Class Hinges
1311 E. Philadelphia Street • Ontario • CA 91761 • USA
PBB reserves the right to make changes without notice.

Template: RSY35