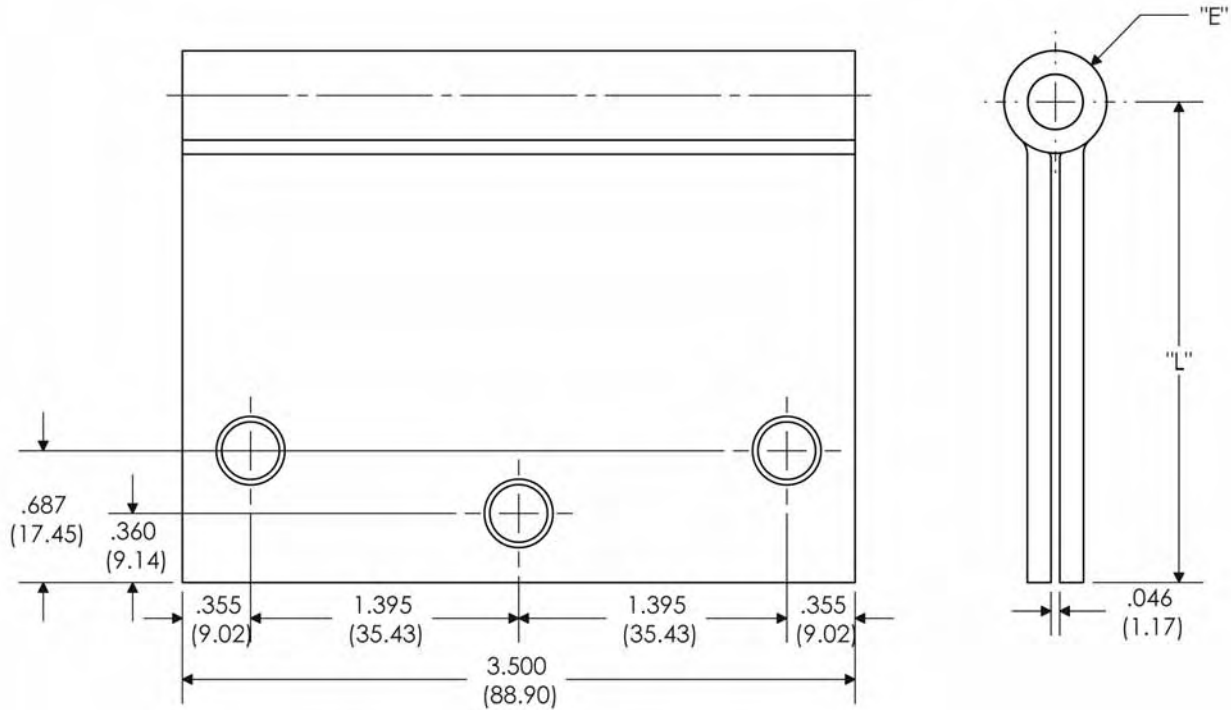




**FULL MORTISE TEMPLATE WIDE THROW**

**WTBB - WTPB - WTCB - WTCP**

**3 1/2" x 4", 3 1/2" x 5"**



Part Number			Gauge of Metal	"E" Outside Dia.	"L" Leaf Width
Steel	Brass	Stainless			
WTBB81/ WTPB81	WTBB21/ WTPB21	WTBB51/ WTPB51	.123"	.534"	2.00"
WTBB81/ WTPB81	WTBB21/ WTPB21	WTBB51/ WTPB51	.123"	.534"	2.50"
WTCB81/ WTCP81	WTCB21/ WTCP21	WTCB51/ WTCP51	.123"	.534"	2.00"
WTCB81/ WTCP81	WTCB21/ WTCP21	WTCB51/ WTCP51	.123"	.534"	2.50"

**NOTE:**

- 1 screw pack includes all machine screws (24), and 1/2 wood screws (12). ATMS & AWS also available.
- Screw size: FHMS - 12-24 x 1/2"  
FHWS - 12 x 1-1/4"
- All hinges are ANSI template.